

water COLOUR



THE CANADIAN SOCIETY OF PAINTERS IN WATER COLOUR / LA SOCIÉTÉ CANADIENNE DE PEINTURES EN AQUARELLE • OCT 2014



Henry Vyfvinkel CSPWC, FOWS, MFA

1935 — 2014

THE CANADIAN
SOCIETY OF PAINTERS
IN WATER COLOUR/
LA SOCIÉTÉ
CANADIENNE DE
PEINTRES EN
AQUARELLE

ADMINISTRATOR

Anita Cotter
80 Birmingham St
Unit B3
Toronto, Ontario M8V 3W6
416-533-5100
Email: info@cspwc.com
Website: www.cspwc.com

CSPWC EXECUTIVE

President

William Rogers

Vice President

Rayne Tunley

Past President

Katherine Zarull

Directors

Gill Cameron
Virginia May
Karin Isenburg
Jean Pederson

REGIONAL DIRECTORS

**British Columbia
& the North**

Heidi Lambert

Alberta & the Prairies

Rex Beanland

Western Ontario

Joanne Lucas Warren

Northern Ontario

Ellen Catherwood

Eastern Ontario

Charles Spratt

Central Ontario

Lin Souliere

Quebec

Garry Hamilton

Atlantic Provinces

Nora Gross

PUBLICATION DATES

Dec/14 Deadline Nov 16
Publication Dec 16

Mar/15 Deadline Feb 16
Publication Mar 16

Editor

Bill Atkinson

Publisher

Rayne Tunley

The great medium of watercolour



Well I hope everyone had a restful and/or productive summer, depending on your expectations for it – both being worthwhile goals.

The Geneva Park Symposium went off very well and was well received

by those who attended, including the instructors. We had a great set of workshops and lots of evening entertainment and information sessions to make the week complete. I think, however, that it is the human connections, camaraderie and sharing of ideas which are the most lasting aspects of this type of event. I'd like to thank **Anita Cotter**, our Administrator and Registrar for the symposium, as well as the other instructors besides myself and they were **Brian Atyeo**, **Richard Belanger**, **Karin Isenburg**, **Linda Kemp**, and **Jean Pederson**.

Thanks also go out to the presenters and sponsors from **Currys**, **Andrea Warren** from **Golden Acrylics**, **Lin Souliere** and I want to extend a huge thank you to all the participants who attended, without you we couldn't run a symposium. I thoroughly enjoyed meeting and mingling with you all during the week and felt that everyone was really enjoying and benefiting from the whole experience. I also want to thank the Management and staff of Geneva Park who were very accommodating to our needs and very pleasant to deal with, and of course the kitchen staff who served up the most delicious meals.

Message from the President Message du Président

The Open Water entries came in, were juried, and 40 paintings were selected for the Aird gallery Exhibition in October-November. Thanks to all who entered, congratulations to the successful artists whose work will make a fine show, and a big note of appreciation and thanks to our **Jurors Joanne Lucas Warren**, **Doug Mays**, and **Barbara Mitchell** for a job well done. I encourage all of you who are able to attend the *Opening on Thursday October 30 from 6-8 PM*. The exhibition runs till November 21st so please drop in and see the show.

September 28th was Canada Watercolour day and by the time the newsletter goes out I hope that many of you will have participated in some way, in groups or by yourself. Please send pictures and notes of your experiences to Anita for our next newsletter.

My work for the Royal Tour has been completed and images sent. The actual work will also be sent shortly as per directions on desired arrival date. Then it will be viewed by **HRH Prince Charles** for his selection of pieces to be included in the *Royal Collection of the Prince of Wales*. I'm truly humbled and honoured by the whole experience. I will update you in the next newsletter on the process as it unfolds.

I will be teaching a Master Class Watercolour Workshop for the McMichael Collection from September 30 to October 5 in Killarney Park. Thanks to **David McEown** for the recommendation.

Enjoy the fall colours and happy painting to you in your studio or in the great outdoors!

Bill

Contents

President's Message	2	Endowment Fund	10
Coming Events	3	Opportunities for Artists	11
Open Water 2014 Invitation	4	Editor's Pick	12
Open Water Jurors	5	News on the Arts	13-17
Geneva Park 2014 Photos	6-7	Member & Assoc. News	18-19
Regional News	8-9	CSPWC Remembers	20

WATERCOLOUR NEWS: EMAIL OR SNAIL MAIL?

Sending out Watercolour News by e-mail is part of our efforts to upgrade the services we deliver, while working more efficiently and economically. However, we have become aware that some newsletter recipients aren't getting their issues. Unfortunately we have no way of knowing who you are.

Please keep the office informed of the email account to which you want us to send your newsletters. Also, let us know if you need the newsletter to be sent to you by mail. Keep up to date on your Society and gain all the advantages of your Membership.

Let Anita know if you are having problems, or even send us your news to add to the upcoming issue, at info@cspwc.com



Coming Events

2014

Oct 28—Nov 21

Open Water 2014

Aird Gallery, Toronto

Opening Reception: Oct 2, 6—8 pm

Nov 1

Deadline Membership Application

Nov 23

World Watercolour Day



Art Group 'Thank You' Discount

Curry's is pleased to offer a 10% discount on regular priced items to members of art groups and associations that partner with Curry's.

Valid member ID must be shown in-store at the beginning of each purchase, at any Curry's store location, in order for the 10% discount to be applied.

The CSPWC is an Art Group Partner. Your membership card will be on your dues receipt. (can be printed, cut out and laminated) so you can enjoy your discount all year. (Discount valid on in-store purchases only)

Great prices and free shipping for on-line orders over \$75.00 (Special Christmas time offer, on \$25.00 till Dec. 31)!

Now with 11 locations in the GTA, celebrating their 100th anniversary encouraging artistic growth.

www.currys.com

WWW.CSPWC.COM

The Canadian Society of Painters in Water Colour
La Société Canadienne de Peintres en Aquarelle



English

français

Eric Bailey is our Webmaster and has been working diligently to update the files, and to correct links that have not been working correctly in the past. We are thankful to have him part of our team. We will be announcing when everything is working correctly. In the meantime, please keep your announcements coming as they will be posted on our site.

Remember: Identify in the subject line of the email that your information is for the web page. In the body of the e-mail please state which region you are in. Attach the information you want posted in a word document no longer than 50 words.

Send your information to: Anita Cotter, our Office Administrator, info@cspwc.com by the 25th of each month.



Dear CSPWC Members and Associates,

You are all cordially invited to attend the 89th CSPWC annual juried 'International' Open Water Exhibition.

*The show runs from
October 28th to November 21, in Toronto,
at the John B. Aird Gallery.*

*We hope you extend the attached invitation to your friends
and family in the Toronto area and we would love to see you
at the Open Reception evening
where over \$11,000 in awards will be announced,
including our grand prize of the A.J. Casson medal.*

*Opening Reception date is
Thursday, October 30th, 6pm to 8pm.*

*We hope you'll be able to attend this exciting celebration of
the best watercolourists in Canada.*

Warm Regards,

*Rayne Tunley
Vice President CSPWC
Open Water 2014 Chair
info@cspwc.com
www.cspwc.com*

John B. Aird Gallery | Galerie John B. Aird

OPEN WATER 2014

The 89th Annual Juried Show of the Canadian Society of Painters in Watercolour
89ème Exposition-Concours Annuelle de la Société Canadienne des Peintres en Aquarelle

October 28 - November 21, 2014 / 28 octobre - 21 novembre 2014

Opening Reception: Thursday, 30 October, 6:00 - 8:00 pm

Vernissage: jeudi, 30 octobre, de 18h à 20h

Macdonald Block, 900 Bay Street (at Wellesley), Édifice Macdonald, 900 rue Bay (angle Wellesley), Toronto
Gallery Hours: Monday to Friday, 10 am - 6 pm / Heures d'ouverture: du lundi au vendredi, de 10h à 18h
www.airdgallery.org email: director@airdgallery.org



Exhibition Jurors

Barbara Mitchell Guest Juror

We are honoured that Barbara Mitchell has accepted our invitation to be our guest Juror for Open Water 2014.

Barbara Mitchell comes with a wealth of knowledge and insight. She is an Independent Art Consultant and is also the Curator at the Arts & Letters Club in Toronto.



Doug Mays CSPWC

A CSPWC member since 2004, Doug May's dedication to art has been a life-long pursuit. His love of drawing at an early age led him to study art in high school and architecture in College.



Today, Doug is enjoying his second career as a watercolour instructor and strong advocate of the watercolour medium. His workshops are conducted in Canada, Mexico and Europe.



Joanne Lucas Warren

B.A.Sc., B. Ed., C.S.P.W.C., S.C.A., O.S.A.

Joanne is a past recipient of the A. J. Casson Award, 2007, and is presently Western Ontario Director of C.S.P.W.C.

A 'wet into wet' technique allows her freedom to design contemporary Watercolour Paintings with unmediated expression and imagination. Her works of art are bold, energetic and creative. She is a teacher, juror and active participant of juried exhibitions.



Her studio and annual exhibition is in Oakville, Ontario.

www.joannelucaswarren.com

GENEVA PARK WATERCOLOUR SYMPOSIUM

JUNE 23RD-27TH, 2014



Bill's plein air class



excited to start (Nola and Vera)



fine dining at Geneva Park



Lin Souliere and friends



Jean Pederson's Class



instructor Brian Atyeo

GENEVA PARK WATERCOLOUR SYMPOSIUM

JUNE 23RD-27TH, 2014



Karin's class



painting on the dock



plein air by the lake



Richard Belanger's class



Sail boat blues



final result

QUEBEC REGIONAL REPORT

By Garry Hamilton

Here is the news from Quebec. **Daniel Barkley** participated with 3 watercolors in *Re-presenting the Nude III* at Evoke Contemporary Gallery, Santa Fe, NM.



Richard Belanger AWS SCA highly regarded artist and invited by CSPWC as an instructor is offering a 2 day w/c workshop on Oct. 11 – 12 and Nov. 8 – 9. The workshops focus on textures in a landscape, wood, etc. plus using warm and cool colors, and mixing colours.

Garry Hamilton is leaving for the Dominican Republic in Oct. to spend the winter painting in the Caribbean.

He will also renovate a condo there as an artist rental unit, info to be posted at a later date on the CSPWC website.

ALBERTA AND THE PRAIRIES REGIONAL REPORT

By Rex Beanland

Members Get Together

Karin Richter very kindly offered her home for a members' get-together on Friday, Oct 3.

News from Northern Alberta

Member **Dale Syrota** passed along some news from her location up in the Peace Country. She reports that they have a very active arts community in the area. By way of example The Grande Prairie Guild of Artists hosted a watercolour workshop with **Lian Quan Zhen**. Dale's work is featured in *The Art of The Peace* magazine which is an excellent resource for artists in northern Alberta and BC. It can be viewed at www.artofthepeace.ca



Art Themes

It's always interesting when you get to know a lot of artists how everyone has their own interests, their own voice and their own journey. Member **Sherry Chanin** shares some of the things that inspire her. She is currently pursuing her interest in combining Celtic art patterns and intricate knots with the calligraphy found in medieval manuscripts. She combines this with realistic 3-dimensional

forms. She is currently working on a series in this style. Sherry has sent along some images of her latest work.

Members News

Rex Beanland was very pleased to have a solo exhibition of his urban landscape paintings at the **Naess Gallery** in Edmonton, August 22 – September 30, 2014. The exhibition: *Drawing On The City: An Exploration of People and the Places They Live* was a very exciting opportunity to show all these paintings together. They are the summation of the last 2 years of my watercolour painting journey.



One of the highlights of the opening was a chance to have a great conversation with **Anne McCartney**, a member from Edmonton. I was very appreciative of Anne's effort to visit the show. It really made me

appreciate my membership in the CSPWC where we all share a love of painting and watercolour in particular.

FabrianoinAcquarello



It is with great pleasure for me to announce as Director of BC several CSPWC Members: **Sandy Kay, Dianne Bersea, Gerry Thompson, Joyce Trygg** and **Heidi Lambert** were all part of the Canadian delegation to be invited to

participate in the *Fabriano in Acquerello 2014 Convention Internazionale* in Fabriano Italy this year. Some of these people were lucky enough to travel to Italy to be part of this Exhibition and convention.



Heidi Lambert, CSPWC Member, has had her painting *Ashleigh's Hat* juried into the North West Watercolour Society (NWWS) Waterworks Exhibition in Bothell, Washington, USA which enables me to apply for my NWWS Signature Status.

As part of *ART in the VINEYARDS*, two of B.C.'s Award winning artists held classes in the Naramata Wine Region of B.C. Sept. 28th to Oct 2nd, 2014

Leslie Redhead CSPWC, AFCA, NWWS taught Plein Air classes and **Sam Boehner** CSPWC instructed classes in Still Life. For more information and a place in this fabulous workshop contact Sam Boehner sam@samboehner.com

News on the Arts

CSPWC News

Not-for-Profit Status: *Progress was made!*

CANADA NOT-FOR-PROFIT CORPORATIONS ACT

- Background
- A. Overview
- B. Highlights
- 1. Part I - Incorporation and Application (Sections 1-10)
- 2. Incorporation (Section 11)
- 3. Application (Section 12)
- 4. Fees (Section 13)
- 5. Resolutions (Section 14)
- 6. Part II - Incorporation (Sections 15-19)
- 7. Application (Section 20)
- 8. Fees (Section 21)
- 9. Resolutions (Section 22)
- 10. Part III - Incorporation (Sections 23-27)
- 11. Application (Section 28)
- 12. Fees (Section 29)
- 13. Resolutions (Section 30)
- 14. Part IV - Incorporation (Sections 31-35)
- 15. Application (Section 36)
- 16. Fees (Section 37)
- 17. Resolutions (Section 38)
- 18. Part V - Incorporation (Sections 39-43)
- 19. Application (Section 44)
- 20. Fees (Section 45)
- 21. Resolutions (Section 46)
- 22. Part VI - Incorporation (Sections 47-51)
- 23. Application (Section 52)
- 24. Fees (Section 53)
- 25. Resolutions (Section 54)
- 26. Part VII - Incorporation (Sections 55-59)
- 27. Application (Section 60)
- 28. Fees (Section 61)
- 29. Resolutions (Section 62)
- 30. Part VIII - Incorporation (Sections 63-67)
- 31. Application (Section 68)
- 32. Fees (Section 69)
- 33. Resolutions (Section 70)
- 34. Part IX - Incorporation (Sections 71-75)
- 35. Application (Section 76)
- 36. Fees (Section 77)
- 37. Resolutions (Section 78)
- 38. Part X - Incorporation (Sections 79-83)
- 39. Application (Section 84)
- 40. Fees (Section 85)
- 41. Resolutions (Section 86)
- 42. Part XI - Incorporation (Sections 87-91)
- 43. Application (Section 92)
- 44. Fees (Section 93)
- 45. Resolutions (Section 94)
- 46. Part XII - Incorporation (Sections 95-99)
- 47. Application (Section 100)
- 48. Fees (Section 101)
- 49. Resolutions (Section 102)
- 50. Part XIII - Incorporation (Sections 103-107)
- 51. Application (Section 108)
- 52. Fees (Section 109)
- 53. Resolutions (Section 110)
- 54. Part XIV - Incorporation (Sections 111-115)
- 55. Application (Section 116)
- 56. Fees (Section 117)
- 57. Resolutions (Section 118)
- 58. Part XV - Incorporation (Sections 119-123)
- 59. Application (Section 124)
- 60. Fees (Section 125)
- 61. Resolutions (Section 126)
- 62. Part XVI - Incorporation (Sections 127-131)
- 63. Application (Section 132)
- 64. Fees (Section 133)
- 65. Resolutions (Section 134)
- 66. Part XVII - Incorporation (Sections 135-139)
- 67. Application (Section 140)
- 68. Fees (Section 141)
- 69. Resolutions (Section 142)
- 70. Part XVIII - Incorporation (Sections 143-147)
- 71. Application (Section 148)
- 72. Fees (Section 149)
- 73. Resolutions (Section 150)
- 74. Part XIX - Incorporation (Sections 151-155)
- 75. Application (Section 156)
- 76. Fees (Section 157)
- 77. Resolutions (Section 158)
- 78. Part XX - Incorporation (Sections 159-163)
- 79. Application (Section 164)
- 80. Fees (Section 165)
- 81. Resolutions (Section 166)
- 82. Part XXI - Incorporation (Sections 167-171)
- 83. Application (Section 172)
- 84. Fees (Section 173)
- 85. Resolutions (Section 174)
- 86. Part XXII - Incorporation (Sections 175-179)
- 87. Application (Section 180)
- 88. Fees (Section 181)
- 89. Resolutions (Section 182)
- 90. Part XXIII - Incorporation (Sections 183-187)
- 91. Application (Section 188)
- 92. Fees (Section 189)
- 93. Resolutions (Section 190)
- 94. Part XXIV - Incorporation (Sections 191-195)
- 95. Application (Section 196)
- 96. Fees (Section 197)
- 97. Resolutions (Section 198)
- 98. Part XXV - Incorporation (Sections 199-203)
- 99. Application (Section 204)
- 100. Fees (Section 205)
- 101. Resolutions (Section 206)
- 102. Part XXVI - Incorporation (Sections 207-211)
- 103. Application (Section 212)
- 104. Fees (Section 213)
- 105. Resolutions (Section 214)
- 106. Part XXVII - Incorporation (Sections 215-219)
- 107. Application (Section 220)
- 108. Fees (Section 221)
- 109. Resolutions (Section 222)
- 110. Part XXVIII - Incorporation (Sections 223-227)
- 111. Application (Section 228)
- 112. Fees (Section 229)
- 113. Resolutions (Section 230)
- 114. Part XXIX - Incorporation (Sections 231-235)
- 115. Application (Section 236)
- 116. Fees (Section 237)
- 117. Resolutions (Section 238)
- 118. Part XXX - Incorporation (Sections 239-243)
- 119. Application (Section 244)
- 120. Fees (Section 245)
- 121. Resolutions (Section 246)
- 122. Part XXXI - Incorporation (Sections 247-251)
- 123. Application (Section 252)
- 124. Fees (Section 253)
- 125. Resolutions (Section 254)
- 126. Part XXXII - Incorporation (Sections 255-259)
- 127. Application (Section 260)
- 128. Fees (Section 261)
- 129. Resolutions (Section 262)
- 130. Part XXXIII - Incorporation (Sections 263-267)
- 131. Application (Section 268)
- 132. Fees (Section 269)
- 133. Resolutions (Section 270)
- 134. Part XXXIV - Incorporation (Sections 271-275)
- 135. Application (Section 276)
- 136. Fees (Section 277)
- 137. Resolutions (Section 278)
- 138. Part XXXV - Incorporation (Sections 279-283)
- 139. Application (Section 284)
- 140. Fees (Section 285)
- 141. Resolutions (Section 286)
- 142. Part XXXVI - Incorporation (Sections 287-291)
- 143. Application (Section 292)
- 144. Fees (Section 293)
- 145. Resolutions (Section 294)
- 146. Part XXXVII - Incorporation (Sections 295-299)
- 147. Application (Section 300)
- 148. Fees (Section 301)
- 149. Resolutions (Section 302)
- 150. Part XXXVIII - Incorporation (Sections 303-307)
- 151. Application (Section 308)
- 152. Fees (Section 309)
- 153. Resolutions (Section 310)
- 154. Part XXXIX - Incorporation (Sections 311-315)
- 155. Application (Section 316)
- 156. Fees (Section 317)
- 157. Resolutions (Section 318)
- 158. Part XL - Incorporation (Sections 319-323)
- 159. Application (Section 324)
- 160. Fees (Section 325)
- 161. Resolutions (Section 326)
- 162. Part XLI - Incorporation (Sections 327-331)
- 163. Application (Section 332)
- 164. Fees (Section 333)
- 165. Resolutions (Section 334)
- 166. Part XLII - Incorporation (Sections 335-339)
- 167. Application (Section 340)
- 168. Fees (Section 341)
- 169. Resolutions (Section 342)
- 170. Part XLIII - Incorporation (Sections 343-347)
- 171. Application (Section 348)
- 172. Fees (Section 349)
- 173. Resolutions (Section 350)
- 174. Part XLIV - Incorporation (Sections 351-355)
- 175. Application (Section 356)
- 176. Fees (Section 357)
- 177. Resolutions (Section 358)
- 178. Part XLV - Incorporation (Sections 359-363)
- 179. Application (Section 364)
- 180. Fees (Section 365)
- 181. Resolutions (Section 366)
- 182. Part XLVI - Incorporation (Sections 367-371)
- 183. Application (Section 372)
- 184. Fees (Section 373)
- 185. Resolutions (Section 374)
- 186. Part XLVII - Incorporation (Sections 375-379)
- 187. Application (Section 380)
- 188. Fees (Section 381)
- 189. Resolutions (Section 382)
- 190. Part XLVIII - Incorporation (Sections 383-387)
- 191. Application (Section 388)
- 192. Fees (Section 389)
- 193. Resolutions (Section 390)
- 194. Part XLIX - Incorporation (Sections 391-395)
- 195. Application (Section 396)
- 196. Fees (Section 397)
- 197. Resolutions (Section 398)
- 198. Part L - Incorporation (Sections 399-403)
- 199. Application (Section 404)
- 200. Fees (Section 405)
- 201. Resolutions (Section 406)
- 202. Part LI - Incorporation (Sections 407-411)
- 203. Application (Section 412)
- 204. Fees (Section 413)
- 205. Resolutions (Section 414)
- 206. Part LII - Incorporation (Sections 415-419)
- 207. Application (Section 420)
- 208. Fees (Section 421)
- 209. Resolutions (Section 422)
- 210. Part LIII - Incorporation (Sections 423-427)
- 211. Application (Section 428)
- 212. Fees (Section 429)
- 213. Resolutions (Section 430)
- 214. Part LIV - Incorporation (Sections 431-435)
- 215. Application (Section 436)
- 216. Fees (Section 437)
- 217. Resolutions (Section 438)
- 218. Part LV - Incorporation (Sections 439-443)
- 219. Application (Section 444)
- 220. Fees (Section 445)
- 221. Resolutions (Section 446)
- 222. Part LVI - Incorporation (Sections 447-451)
- 223. Application (Section 452)
- 224. Fees (Section 453)
- 225. Resolutions (Section 454)
- 226. Part LVII - Incorporation (Sections 455-459)
- 227. Application (Section 460)
- 228. Fees (Section 461)
- 229. Resolutions (Section 462)
- 230. Part LVIII - Incorporation (Sections 463-467)
- 231. Application (Section 468)
- 232. Fees (Section 469)
- 233. Resolutions (Section 470)
- 234. Part LIX - Incorporation (Sections 471-475)
- 235. Application (Section 476)
- 236. Fees (Section 477)
- 237. Resolutions (Section 478)
- 238. Part LX - Incorporation (Sections 479-483)
- 239. Application (Section 484)
- 240. Fees (Section 485)
- 241. Resolutions (Section 486)
- 242. Part LXI - Incorporation (Sections 487-491)
- 243. Application (Section 492)
- 244. Fees (Section 493)
- 245. Resolutions (Section 494)
- 246. Part LXII - Incorporation (Sections 495-499)
- 247. Application (Section 500)
- 248. Fees (Section 501)
- 249. Resolutions (Section 502)
- 250. Part LXIII - Incorporation (Sections 503-507)
- 251. Application (Section 508)
- 252. Fees (Section 509)
- 253. Resolutions (Section 510)
- 254. Part LXIV - Incorporation (Sections 511-515)
- 255. Application (Section 516)
- 256. Fees (Section 517)
- 257. Resolutions (Section 518)
- 258. Part LXV - Incorporation (Sections 519-523)
- 259. Application (Section 524)
- 260. Fees (Section 525)
- 261. Resolutions (Section 526)
- 262. Part LXVI - Incorporation (Sections 527-531)
- 263. Application (Section 532)
- 264. Fees (Section 533)
- 265. Resolutions (Section 534)
- 266. Part LXVII - Incorporation (Sections 535-539)
- 267. Application (Section 540)
- 268. Fees (Section 541)
- 269. Resolutions (Section 542)
- 270. Part LXVIII - Incorporation (Sections 543-547)
- 271. Application (Section 548)
- 272. Fees (Section 549)
- 273. Resolutions (Section 550)
- 274. Part LXIX - Incorporation (Sections 551-555)
- 275. Application (Section 556)
- 276. Fees (Section 557)
- 277. Resolutions (Section 558)
- 278. Part LXX - Incorporation (Sections 559-563)
- 279. Application (Section 564)
- 280. Fees (Section 565)
- 281. Resolutions (Section 566)
- 282. Part LXXI - Incorporation (Sections 567-571)
- 283. Application (Section 572)
- 284. Fees (Section 573)
- 285. Resolutions (Section 574)
- 286. Part LXXII - Incorporation (Sections 575-579)
- 287. Application (Section 580)
- 288. Fees (Section 581)
- 289. Resolutions (Section 582)
- 290. Part LXXIII - Incorporation (Sections 583-587)
- 291. Application (Section 588)
- 292. Fees (Section 589)
- 293. Resolutions (Section 590)
- 294. Part LXXIV - Incorporation (Sections 591-595)
- 295. Application (Section 596)
- 296. Fees (Section 597)
- 297. Resolutions (Section 598)
- 298. Part LXXV - Incorporation (Sections 599-603)
- 299. Application (Section 604)
- 300. Fees (Section 605)
- 301. Resolutions (Section 606)
- 302. Part LXXVI - Incorporation (Sections 607-611)
- 303. Application (Section 612)
- 304. Fees (Section 613)
- 305. Resolutions (Section 614)
- 306. Part LXXVII - Incorporation (Sections 615-619)
- 307. Application (Section 620)
- 308. Fees (Section 621)
- 309. Resolutions (Section 622)
- 310. Part LXXVIII - Incorporation (Sections 623-627)
- 311. Application (Section 628)
- 312. Fees (Section 629)
- 313. Resolutions (Section 630)
- 314. Part LXXIX - Incorporation (Sections 631-635)
- 315. Application (Section 636)
- 316. Fees (Section 637)
- 317. Resolutions (Section 638)
- 318. Part LXXX - Incorporation (Sections 639-643)
- 319. Application (Section 644)
- 320. Fees (Section 645)
- 321. Resolutions (Section 646)
- 322. Part LXXXI - Incorporation (Sections 647-651)
- 323. Application (Section 652)
- 324. Fees (Section 653)
- 325. Resolutions (Section 654)
- 326. Part LXXXII - Incorporation (Sections 655-659)
- 327. Application (Section 660)
- 328. Fees (Section 661)
- 329. Resolutions (Section 662)
- 330. Part LXXXIII - Incorporation (Sections 663-667)
- 331. Application (Section 668)
- 332. Fees (Section 669)
- 333. Resolutions (Section 670)
- 334. Part LXXXIV - Incorporation (Sections 671-675)
- 335. Application (Section 676)
- 336. Fees (Section 677)
- 337. Resolutions (Section 678)
- 338. Part LXXXV - Incorporation (Sections 679-683)
- 339. Application (Section 684)
- 340. Fees (Section 685)
- 341. Resolutions (Section 686)
- 342. Part LXXXVI - Incorporation (Sections 687-691)
- 343. Application (Section 692)
- 344. Fees (Section 693)
- 345. Resolutions (Section 694)
- 346. Part LXXXVII - Incorporation (Sections 695-699)
- 347. Application (Section 700)
- 348. Fees (Section 701)
- 349. Resolutions (Section 702)
- 350. Part LXXXVIII - Incorporation (Sections 703-707)
- 351. Application (Section 708)
- 352. Fees (Section 709)
- 353. Resolutions (Section 710)
- 354. Part LXXXIX - Incorporation (Sections 711-715)
- 355. Application (Section 716)
- 356. Fees (Section 717)
- 357. Resolutions (Section 718)
- 358. Part LXXXX - Incorporation (Sections 719-723)
- 359. Application (Section 724)
- 360. Fees (Section 725)
- 361. Resolutions (Section 726)
- 362. Part LXXXXI - Incorporation (Sections 727-731)
- 363. Application (Section 732)
- 364. Fees (Section 733)
- 365. Resolutions (Section 734)
- 366. Part LXXXXII - Incorporation (Sections 735-739)
- 367. Application (Section 740)
- 368. Fees (Section 741)
- 369. Resolutions (Section 742)
- 370. Part LXXXXIII - Incorporation (Sections 743-747)
- 371. Application (Section 748)
- 372. Fees (Section 749)
- 373. Resolutions (Section 750)
- 374. Part LXXXXIV - Incorporation (Sections 751-755)
- 375. Application (Section 756)
- 376. Fees (Section 757)
- 377. Resolutions (Section 758)
- 378. Part LXXXXV - Incorporation (Sections 759-763)
- 379. Application (Section 764)
- 380. Fees (Section 765)
- 381. Resolutions (Section 766)
- 382. Part LXXXXVI - Incorporation (Sections 767-771)
- 383. Application (Section 772)
- 384. Fees (Section 773)
- 385. Resolutions (Section 774)
- 386. Part LXXXXVII - Incorporation (Sections 775-779)
- 387. Application (Section 780)
- 388. Fees (Section 781)
- 389. Resolutions (Section 782)
- 390. Part LXXXXVIII - Incorporation (Sections 783-787)
- 391. Application (Section 788)
- 392. Fees (Section 789)
- 393. Resolutions (Section 790)
- 394. Part LXXXXIX - Incorporation (Sections 791-795)
- 395. Application (Section 796)
- 396. Fees (Section 797)
- 397. Resolutions (Section 798)
- 398. Part LXXXXX - Incorporation (Sections 799-803)
- 399. Application (Section 804)
- 400. Fees (Section 805)
- 401. Resolutions (Section 806)
- 402. Part LXXXXXI - Incorporation (Sections 807-811)
- 403. Application (Section 812)
- 404. Fees (Section 813)
- 405. Resolutions (Section 814)
- 406. Part LXXXXXII - Incorporation (Sections 815-819)
- 407. Application (Section 820)
- 408. Fees (Section 821)
- 409. Resolutions (Section 822)
- 410. Part LXXXXXIII - Incorporation (Sections 823-827)
- 411. Application (Section 828)
- 412. Fees (Section 829)
- 413. Resolutions (Section 830)
- 414. Part LXXXXXIV - Incorporation (Sections 831-835)
- 415. Application (Section 836)
- 416. Fees (Section 837)
- 417. Resolutions (Section 838)
- 418. Part LXXXXXV - Incorporation (Sections 839-843)
- 419. Application (Section 844)
- 420. Fees (Section 845)
- 421. Resolutions (Section 846)
- 422. Part LXXXXXVI - Incorporation (Sections 847-851)
- 423. Application (Section 852)
- 424. Fees (Section 853)
- 425. Resolutions (Section 854)
- 426. Part LXXXXXVII - Incorporation (Sections 855-859)
- 427. Application (Section 860)
- 428. Fees (Section 861)
- 429. Resolutions (Section 862)
- 430. Part LXXXXXVIII - Incorporation (Sections 863-867)
- 431. Application (Section 868)
- 432. Fees (Section 869)
- 433. Resolutions (Section 870)
- 434. Part LXXXXXIX - Incorporation (Sections 871-875)
- 435. Application (Section 876)
- 436. Fees (Section 877)
- 437. Resolutions (Section 878)
- 438. Part LXXXXXX - Incorporation (Sections 879-883)
- 439. Application (Section 884)
- 440. Fees (Section 885)
- 441. Resolutions (Section 886)
- 442. Part LXXXXXXI - Incorporation (Sections 887-891)
- 443. Application (Section 892)
- 444. Fees (Section 893)
- 445. Resolutions (Section 894)
- 446. Part LXXXXXXII - Incorporation (Sections 895-899)
- 447. Application (Section 900)
- 448. Fees (Section 901)
- 449. Resolutions (Section 902)
- 450. Part LXXXXXXIII - Incorporation (Sections 903-907)
- 451. Application (Section 908)
- 452. Fees (Section 909)
- 453. Resolutions (Section 910)
- 454. Part LXXXXXXIV - Incorporation (Sections 911-915)
- 455. Application (Section 916)
- 456. Fees (Section 917)
- 457. Resolutions (Section 918)
- 458. Part LXXXXXXV - Incorporation (Sections 919-923)
- 459. Application (Section 924)
- 460. Fees (Section 925)
- 461. Resolutions (Section 926)
- 462. Part LXXXXXXVI - Incorporation (Sections 927-931)
- 463. Application (Section 932)
- 464. Fees (Section 933)
- 465. Resolutions (Section 934)
- 466. Part LXXXXXXVII - Incorporation (Sections 935-939)
- 467. Application (Section 940)
- 468. Fees (Section 941)
- 469. Resolutions (Section 942)
- 470. Part LXXXXXXVIII - Incorporation (Sections 943-947)
- 471. Application (Section 948)
- 472. Fees (Section 949)
- 473. Resolutions (Section 950)
- 474. Part LXXXXXXIX - Incorporation (Sections 951-955)
- 475. Application (Section 956)
- 476. Fees (Section 957)
- 477. Resolutions (Section 958)
- 478. Part LXXXXXXX - Incorporation (Sections 959-963)
- 479. Application (Section 964)
- 480. Fees (Section 965)
- 481. Resolutions (Section 966)
- 482. Part LXXXXXXXI - Incorporation (Sections 967-971)
- 483. Application (Section 972)
- 484. Fees (Section 973)
- 485. Resolutions (Section 974)
- 486. Part LXXXXXXXII - Incorporation (Sections 975-979)
- 487. Application (Section 980)
- 488. Fees (Section 981)
- 489. Resolutions (Section 982)
- 490. Part LXXXXXXXIII - Incorporation (Sections 983-987)
- 491. Application (Section 988)
- 492. Fees (Section 989)
- 493. Resolutions (Section 990)
- 494. Part LXXXXXXXIV - Incorporation (Sections 989-993)
- 495. Application (Section 994)
- 496. Fees (Section 995)
- 497. Resolutions (Section 996)
- 498. Part LXXXXXXXV - Incorporation (Sections 997-999)
- 499. Application (Section 1000)
- 500. Fees (Section 1001)
- 501. Resolutions (Section 1002)

As you will know from your own personal vote at the AGM, either by proxy or in person, regarding the passing of the our new revised by-laws, we are in the process of making a submission to Corporations Canada for a 'Certificate of Continuance'.

This certificate will guarantee our legitimacy under the new 'Not-For-Profit Corporations Act' and thereby ensure our 'charitable status' under the Charities Directorate.

The submission was made in September and we now await our Certificate. When it arrives we will make the required submission to maintain our charitable status. This step calls for a celebration as a major marker has been reached in this process.

- Peter Marsh


[Donate Now](#)

[About](#) [Giving](#) [Grants](#) [News](#) [Vital Initiatives](#) [Professional Advisors](#)

Canadian Society of Painters in Water Colour Endowment Fund (CSPWC)

[Donate to fund](#)

About Toronto's Community Foundation

Since 1981, the Toronto Community Foundation has been connecting philanthropy to community needs and opportunities to make Toronto the best place to live, work, learn and grow through the power of giving. With more than 425

I never noticed the five dollars a month I donate automatically to the CSPWC. In fact, I never even think about it until I write something for the newsletter about this important foundation. By now, my donation has been deposited automatically for a goodly number of years and so the amount is really building up. In addition any interest on the money has also been deposited into the endowment fund. In fact the capital that is put into this fund is never used it just sits there making interest.

So each year that the fund is getting bigger it is able to supply our operating budget with some of the interest, without ever depleting the capital in the fund. Of course, any of that money which is not needed during any given year is just reinvested in the fund and the fund gets bigger and bigger. It is a slow process but with each subsequent year of donations the CSPWC becomes more financially stable and eventually will be very sound. I like this concept because I know that my donation will keep on working for the society forever, and could never be squandered by reckless spending. I urge you to join me, even with the smallest of monthly donations. If you are a member of the society there is no better way to support the functioning of the society in a perpetual way.

THE ENDOWMENT FUND CAN BE FOUND AT THE TORONTO FOUNDATION:

<https://torontofoundation.ca/fund/canadian-society-painters-water-colour-endowment-fund>

- Peter Marsh

Can You Make a Contribution?

The CSPWC/SCPA Endowment Fund operates under the umbrella of The Toronto Community Foundation. It is probably the most important factor contributing to a stable financial future for the CSPWC/SCPA. The fund has been in operation since 2011 but it takes considerable time for people to join in the effort and to understand the importance of an endowment fund. Firstly, any money you donate will never be spent. Only the interest is spent. This is a very important point since a multitude of contributions will remain in operation in perpetuity. Additionally, the fiduciary responsibilities in terms of security and audit are maintained for the most-part by the Toronto Community Foundation, which eliminates ongoing responsibilities for our volunteer board on a yearly basis. Personally I donate \$5 a month. It sounds like a small amount until one adds up the years that I have been doing this. If every member did this we would have a considerable sum of cash which would be enlarging in effectiveness on an ongoing basis. I know it would not be easy for some members to do this, but if it was done by those who can afford to do it, it would be appreciated by all those who would like to see our era leave a legacy for the future. Individuals make their contribution to the society in many different ways. If you can make any sort of donation to our endowment fund I urge you to do it. It is the most effective way we can improve the future financial well-being of the Society. Thank you. - *Peter Marsh*

Nola McConnan (Toronto, ON)



From October 23, 30 November 6, Nola will lead a three week exploration of the cat in watercolour at the Willowdale Group of Artists Edithvale workshop site. This is a follow up to the spring workshop *Animals and Their People*. Please contact Jo Bauman jobaumann@sympatico.ca for more information.

Clarkson Society of Artists (Mississauga, ON)

Looking ahead to March 18, 2015 the Clarkson Society of Artists is hosting a one day workshop at their studio space at Christ Church United 1700 Mazo Crescent. Please contact Lyla Stockdale kraftybear@sympatico.ca for further information.

Evelyn Dunphy (West Bath, ME)

Evelyn Dunphy is running several painting tours in 2015:

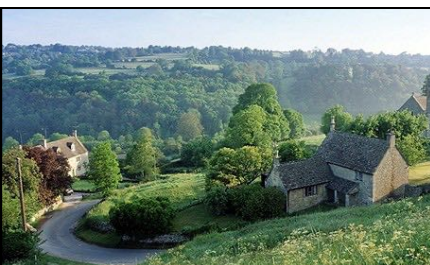
May 30 – June 5: *Painting the Wild Coast of Ireland* at Anam Cara on the Beara Peninsula of Ireland. For information: <http://www.evelyndunphy.com/>

September 23 – 30 *Painting on the Costa Brava* of Spain – for information contact Jackie Grandchamps at contact@frenchescapade.com

Bill Rogers (Antigonish, NS)

Bill Rogers is teaching workshops at McLean House Inn in Souris PEI October 17-19, and St Georges Bermuda from November 8-15 (3 one day workshops on various topics). Check it out at williamrogersart.com

Rayne Tunley (Port Credit, ON)



Rayne is offering a trip through Gery Puley and Rayne Tunley's "Art Portfolio Workshops" to the *Heart of England*, May 4—17, 2015. We will be painting, sketching and photographing some of England's most beautiful countryside (4 nights: Derbyshire, 4 nights: Suffolk, 4 nights: Cotswolds). For more information: info@rayneproductions.com



Rudy Stussi's book published

A new book titled *Schraeg / Askew* covering the last 15 years of my work has just been published in Berlin by Nicolai press. It contains approx. 140 reproductions of watercolours and oil paintings over 128 pages and includes a critical text by Berlin journalist **Michaela Nolte** and autobiographical stories, plus chapters on my murals, illustrations, and the trailblazing 5th Perspective. It is bilingual English / German, costs 30 Euros, and can be obtained online.



In connection with the book release I was part of a 3-man exhibition at the **Galerie Reichlin** in Switzerland to Sept 20, and a current solo exhibition just opened at the **Galerie Taube** in Berlin which runs through to Nov 22. There will be a further solo exhibition opening on Nov 5 at the **Galerie Cramer** in Chur, Switzerland for 2 weeks, and a big solo exhibition scheduled for the



HR Giger Museum in Gruyeres, Switzerland

from the end of February / beginning March through the summer 2015.

In addition to that the **Kuenstlersonderbund** of Germany, of which I am a new member, chose my painting for the poster, invitation and catalogue cover for their biennial exhibition titled *War & Peace* in Berlin from Sept 7 to 28 of this year.

- Rudy Stussi



Gerry Thompson's "The Gathering #2" exhibited in Italy

Gerry's watercolour, *Perpetual Fragrance*, was a finalist in the October/November 2013 edition of the *International Artist Magazine*.

Her watercolour, *The Gathering #2*, was awarded 3rd Prize in the June/July 2014 edition of the *International Artist Magazine*. The painting was also one of 13 Canadian watercolours that were included in the invitational *Fabriano in Watercolour 2014 international exhibition*, which was held in Fabriano, Italy. Gerry and her husband travelled to Italy in June to attend the



exhibition events.

The *American Art Collector*, July 2014 magazine featured a one page article about Gerry's art philosophy and painting methods, titled *Light and Shadows*. Images of her paintings, *French Vanilla*, *Milestone*, and *The Gathering #2* were included in the article.



Doris McCarthy Artist-in-Residence Centre - Call for Applications

Barbara Sutherland shares with us that the Ontario Heritage Trust has launched the **Doris McCarthy Artist-in-Residence Centre**. Applications are now being accepted for next year, with the deadline being **October 14, 2014**. Doris' dream for her property involved making it available to artists, writers, and musicians for periods of serious work. As a member of the advisory panel for Ontario Heritage Trust I ask you to please share this exciting development with any of your contacts with connections to the arts, individuals and organizations who in turn can help get the message out.



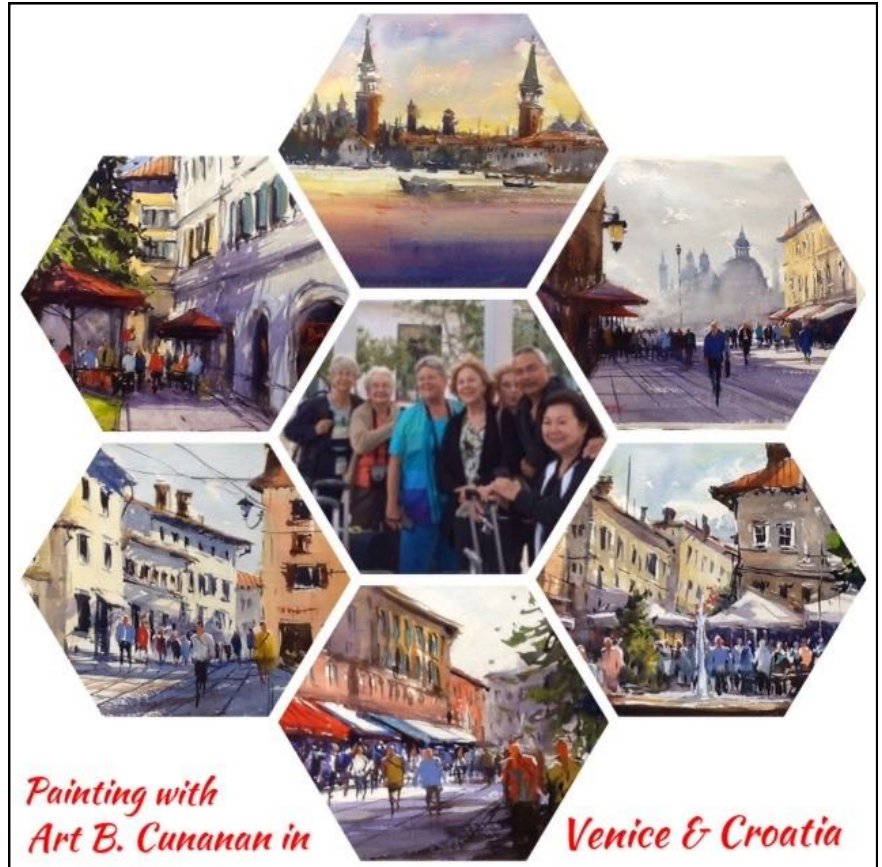
[The guide and application is available online at the following link:](http://www.heritagetrust.on.ca/dmair)

<http://www.heritagetrust.on.ca/dmair>

An Art Adventure in Venice and Croatia

"Every day is a gift - what nature brings to us is the beauty of our surroundings. We have endless subjects. As an artist, we are privilege to see the vast landscape and capture it with our paint and brushes to share. To have this artistic talent is God's gift...sharing them is God given!" Art Cunanan, CSPWC, 2014

From August 29-Sept 1, three associate CSPWC members, (Gerry Hogaboam, Deanna Sager and Vera Taylor) along with three other serious and skilled painters, (Irene Kennel, Heidi Patricio-Nadon, and Connie Scott) had the pleasure of taking a painting tour to Venice and Croatia to enjoy mentoring by Art Cunanan, a well-known CSPWC member. His wife Lu accompanied us and performed the roles of trip organizer, documentary photographer and painting site scout.



We began our tour zooming by water taxi to the quiet community of Sant'Elena which is located in the outer part of **Venice**. The city of Venice is shaped like a fish with the Grand Canal winding through the belly of the fish with canals in all directions. Our hotel, Best Western Sant'Elena, was located in the tail fin of the fish and provided us with a sense of the real residents of Venice with quiet locations away from the high pressure tourist zones. We could easily walk along the water front promenade and enjoy a direct view of St Marco Square as a lovely panorama! We painted Via Garibaldi, a bustling local cafe and market street, the panorama of Venice and then we zeroed in to paint the Rialto Mercado, the market adjacent to the famed Rialto Bridge - the most photographed and painted bridge in Venice. On the only rainy day, we enjoyed visiting the historic churches and the Peggy Guggenheim collection of 20th century art.

It was very easy to get around in Venice by taking the Vaporetti (the water taxi system), which operates just like the Toronto GO train with stops every 5-7 minutes along the Grand Canal. You buy a single ride for 7 euros, or buy a pass that lasts 24 hours (20 euros) or 48 (for 30 euros). We bought the 48 hour pass and certainly got our money's worth using a hop on and hop off mode to see many key sites. (cont.)



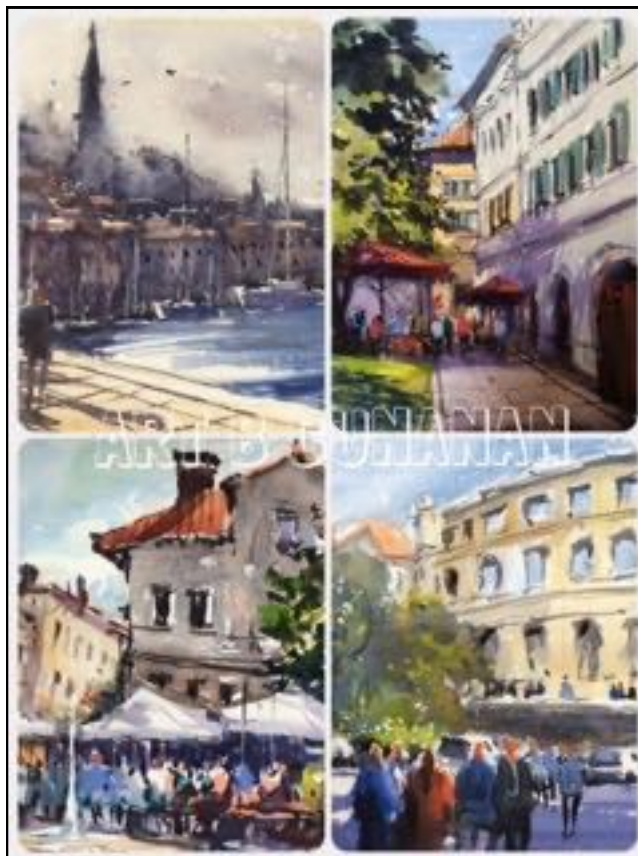
An Art Adventure in Venice and Croatia, cont.

After four wonderful days in Venice we travelled by transit van through northern Italy and Serbia, viewing the Alps in the distance as we went to our destination in **Pula, Croatia**. Pula is a well-known sea port, ship-building centre and vacation mecca for Europeans who want to enjoy the sun, beaches and swimming in the warm turquoise waters of the Adriatic Sea.

Pula is a city with ancient Roman architecture still standing in well-preserved state throughout the inner, "old city of Pula." These structures include, huge arches, the temple of Augustus, numerous churches and walled neighbourhoods. The most outstanding piece is a fully preserved amphitheatre or arena almost as large as the one in Rome. This is a focal point for high profile activities, and community events. We painted a view of the amphitheatre, the picturesque side streets and cafes.

The Pula Market was a highlight for painting and sight-seeing featuring fresh fruits and vegetables, flowers both fresh and dried, a full range of seafood stalls including big huge octopi, as well as honeys, balsamics and their world famous truffle oil! We also painted the interesting people at the market. Both children and adults joined us as we painted in Market Square. We offered paper and paints to the children and of course they joined right in. As in many countries, Canadians are welcomed and well regarded. Pula was very hospitable and safe!

To extend our experiences while in Croatia we visited the small hill top village of **Groznjan** - a very picturesque, unspoiled little town that was "back in time" and totally devoted to being an arts community with artisans, galleries and specialized food outlets as the activity focus of the town. Floral and vine landscaping was everywhere - a real treat to photograph and



paint!

Traveling south, we visited the colourful seaport town of **Rovinj**. It features a beautiful panorama topped by a church steeple and dramatic cypress and pine trees. The town projects out into the Adriatic so is entirely edged by sailboats, exotic yachts and watercraft of all kinds. The brilliant multi-coloured houses give a festive atmosphere with all the town lanes full of interesting shops and cafes. Croatians value the arts and so many shops were galleries or artisan outlets for hand crafted items of all types.

Throughout our trip we worked hard as our very skilled teacher, Art Cunanan, put us through the paces of 2 paintings a day. We enjoyed his dedicated commitment to showing us a full range of techniques and

capturing the landscape and people around us.

As our trip drew to a close, Art asked us to bring a painting that didn't satisfy us to a "fix it" clinic where he showed us how to modify and "punch up" our version. It was like watching a magician at work to see how he could transform a "mediocre" painting into a strong and satisfying effort. We all agreed that this painting adventure was a great learning experience!

At our final dinner and evaluation night, we toasted a marvelous experience that we will treasure forever. We all would recommend Venice and Croatia as a terrific opportunity to paint picturesque landscape while enjoying beautiful historic locations and lovely warm people who welcomed us into their midst. If you get a chance to go to this region, don't miss the opportunity!

Submitted by Vera Taylor, in collaboration with Art and Lu Cunanan and on behalf of our team of 6 avid painters who share a passion for making water colour landscapes!

The Plein Air Ensemble

In 1989 **Pierrette Dulude Bohay** and **Charlie Spratt** along with artist **Andrew Lyall** organized a small group of artists to go painting for a weekend. Since then the group has grown and it has become a very popular and well attended event.

These Plein Air Ensemble trips happen twice a year, the first in the Spring to enjoy the last little patches of snow and the second trip in the Fall to capture the gorgeous fall colours, reds, oranges, yellows etc. What better way to enjoy nature at its best and to get to know the beautiful province of Quebec. The scenery is fabulous: mountains, lakes, amazing waterfalls etc. The group has been to **High Water** and **Sutton** in the Eastern Townships, **Cammac**, Quebec City, **Lac des Plages**, **Ste Agathe**, **Ste Adele** and **Charlevoix**, to name a few of the many venues.



About a month ago I met Pierrette and Charlie in Plantagenet at an Art and Horses event hosted by Pierrette's daughter Suzanne. We realized that this fall will be the 25th anniversary of the Plein Air Ensemble. So far it has been a fantastic journey for all who have taken part in these events over the years. Thank you Pierrette and Charlie from all who participated and may it continue for years to come.

- Patricia Smith

CSPWC on FACEBOOK

CSPWC News

facebook
Search for people, places and things
Rayne Tunley Home

wikipedia.org

About Canadian Society of Painters in Water Colour

CSPWC was merged with this page [?] · Public Figure

The **Canadian Society of Painters in Water Colour**, founded in 1925 is considered to be Canada's official national water colour Society. Since the 1980s the Society has enjoyed Vice-regal Patronage from the incumbent Governor-General of Canada. Recognized by a long list of international exhibitions it is the Canadian eq...

141 people like this topic

Continue Reading

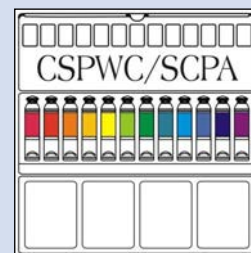
From Wikipedia, the free encyclopaedia · Edit on Wikipedia

Liked Edit

Lin Souliere has set up a Facebook page for the CSPWC/SCPA.

This initiative in social media may well provide the society with another tool for attracting members and sharing our love of watercolour painting.

If you have a Facebook account already please search for the page and "friend" it which increases the range of any announcements that might be posted. If you haven't ventured into Facebook perhaps this could be your starting point, you will need to create your own Facebook page and then search for the CSPWC page.





Art Supply News

The CSPWC recently learned of an exciting new Canadian company called **Colors of Nature**, who provide 'earth-friendly' vegan art supplies and paints.

During our symposium in June, owner **Mark Stryker** of **Colors by Nature**, presented the benefits of their 'green' product line and provided samples for our many symposium attendees.

As part of an **Affiliate Program with Colors by Nature**, CSPWC members and Associates can now purchase their products on-line from their website at a **20% discount**.

In addition to this discount, Colors of Nature will also tabulate the amount of savings each month from the CSPWC orders and a cheque in that amount **will be donated back to the CSPWC**.

Any artist that makes a painting with 100% Color of Nature paints also has an opportunity to have their work posted on their website and blog.

Visit their website, www.colorsofnature.com and enter the Coupon Code: **Members-CSPWC-20** and receive 20% off of your purchase.

Please read a bit more about the company and let us, (as well as Colors of Nature) know what you think.



Colors of Nature provides artists with earth-friendly, vegan art supplies and paint. Our vision is to be as environmentally responsible as we possibly can, since the natural resources we rely on should be respected and conserved. Colors of Nature paint and supplies come with these assurances:

- a zero carbon emissions footprint at our office and manufacturing facility
- cornstarch and recycled paper packaging materials
- recycled plastic and recyclable aluminum tubes
- zero water printing methods for letterhead and labeling
- brush handles from renewable wood and non-animal bristles
- watercolor paper made of bamboo or tree-free fibres
- watercolor and oil paints that are made from naturally derived pigments and plant-based ingredients
- no petroleum products in any of our paints
- vegan and cruelty-free
- non-toxic, ACMI certified
- biodegradable and safe for humans, animals and the environment

Our watercolor paint comes in pots or tubes, and is made from plant ingredients and pigments that come from the earth. They are free from petroleum and each is examined to ensure its safety to the artist and the environment. Our paints are lightfast and transparent, but have the versatility for opaque coverage as well. We also provide a range of earth-friendly and vegan art supplies, such as loose pigments, mullers, Hahnemühle paper, EcoPaper, encaustic pucks, oil paint and vegan brushes. Visit us online at www.colorsofnature.com for more products and information and to visit our gallery to see what other artists have created with our watercolor paint line.

NORA GROSS (Dartmouth, NS)
Nora Gross, Atlantic Regional Director, will be teaching w/c classes starting on Sept 15th. For more information regarding the classes (and acrylic classes) call Nora at 462-3886 or agross@eastlink.ca

MYRTLE-ANN REMPEL (Abbotsford, BC) was chosen as Favourite visual Artist in the Fraser Valley and she had a painting chosen for the international POTE exhibition including a Bio, Artists statement and Photos. She will also receive an award on Oct 8th from the University of the Fraser Valley as one of the "Top 40 Distinguished Alumni".

DOREEN RENNER (Mississauga, ON) had a painting juried in to the Society of Canadian Artists



Elected Members Exhibition at the Etobicoke Civic Centre Gallery this summer. She also had a painting accepted in the SCA 46th Open National juried Exhibition at the Salmon Arm Gallery, in Salmon Arm, B.C, running from Sept. 5 to September 27, 2014.

VERA BOBSON (Toronto, ON) has the following events: 1) FRONTIER Contemporary Art Exhibition. The Project Gallery in September; 2) Art at the Arbitration Place Sept. - Dec. 2014; 3). Project Art Benefit, Pop up Gallery for the Sunnybrook Foundation and the Odette Cancer Center and 4). Solo Show, The Project Gallery Oct. 16th - Oct. 22nd, Opening Reception Oct. 16th.

JANET BAKER (Mississauga, ON) was one of 36 invited artists who participated in Step Back/Look Forward from July 13-August 24 at PAMA, (Peel Art Gallery, Museum



and Archives). Janet's piece was a portrait of her late son Gary, painted from memory with her left foot, inspired by the movie My Left Foot.

MONICA SHELTON (West Vancouver, BC) had a successful exhibition,



Endless Summer, at the Bugeira Matheson Gallery in Edmonton, AB, August 21 - Sept. 4, 2014
www.bugeramathesongallery.com

WILF MCOSTRICH (Toronto, ON) won a major award for "soft edged impressionism" at the National Exhibition of American Watercolours held at the View Gallery in Old Forge, New York State. His painting, Goblin Forest was on the cover of the show catalogue and used in a design poster. His work was the first painting sold at the exhibition.



DOMINIK MODLINSKI (Nanaimo, BC) had a very successful exhibition in China, organized by Gaia Spiritual Ocean. The exhibition consisted of 40 paintings from his world travels. He also donated a painting for the children educational charity in China and will return to China in spring 2015 for a show about his autumn journey to Bolivia. <http://paintingjourneys.com/NEWS.html>

JOHN INGLIS (Toronto, ON) is having a solo exhibition under the auspices of the OCAD U Alumni Association at the Yellow House Gallery from October 2 to Saturday October 25, 2014. The show, Postcards from the Psyche: Images from an Interior Source includes about 20 works, most of them new watercolours.
christina@yellowhouse.ca

PAM MCKINNON (Brockville, ON) had a solo exhibition at the Brockville Art's Centre, 235 King St. West, August 30th to September 29th. Her painting,



Watercolour Cake, won third prize in the 7th annual St. Lawrence College Alumni Show at the Marianne van Silfhout Gallery in Brockville.

PATRICIA SMITH (Dunrobin, ON) Her painting,



Oh the Memories, was accepted in the Society of Canadian Artist and exhibited in September at the Salmon Arm Gallery in Salmon Arm, BC. It is an old barn in the Eastern Townships painted in 2012 on a Plein Air Ensemble outing. The Plein Air Ensemble will be celebrating 25 years this October.

BILL ROGERS (Antigonish, NS) For Canada Watercolour Day on September 18 Bill did a life session with his drawing group in Antigonish. Then Bill headed for Toronto and Killarney Park where he taught a Master Class in Plein Air Watercolour for the McMichael Collection, travelling in the footsteps of our founders Frank Carmichael and AJ Casson. His one man show of recent work at Lyghtesome Gallery, Antigonish, runs from October 7th-30th.

SUSAN CHATER (Richmond Hill, ON) will be participating in the Richmond Hill Juried Studio Tour on October 18th and 19th. In March she was invited to join a gallery in London England, and has taken a dozen paintings for showing at the Edinburgh Art Fair in November.

BARB LARGE (Unionville, ON) participated in the Headwaters Arts Festival Juried Art Show and Sale, showing five paintings, which took place at the SGI Canada Caledon Centre for

Culture and Education, Caledon, Ontario, on September 20-21 and 27-28.

HOSSEIN JAJOUËI (Calgary, AB) took part in the Annual International Perceptual Show (FCA) with a painting entitled *In the middle of Chinook* and also will take part in XI International Watercolor Biennial Exhibition in Mexico City in January 2015 with his painting *Grassland*

POPPY BALSER (Digby NS), will begin her third annual 60 day daily painting series on October 1. Follow along via www.poppybalsar.com. Poppy was also selected as one of the 12 artists to contribute paintings to the Halifax CBC Radio's "Sharing the View" calendar. Visit the CBC site here: <http://www.cbc.ca/ns/features/2015-sharing-the-view/> for more info and for a short video where Poppy describes some of the challenges of plein air painting.

STEPHANIE QUAINTON STEEL (Sidney, BC) has been inducted into the Sidney Fine Arts Masters Group through 2 First place wins in the Fine Arts open Juried Exhibitions in B.C. One in watercolour entitled *Works on Paper and Under Glass* and one layered paper sculpture. Sidney Fine Arts began in 2002, each year taking in approximately 2000 all media entries per year.

ASSOCIATE NEWS

NOLA MCCONNAN (Toronto, ON) August 20-22 Relhok Farm in Dalston, just north of Barrie hosted Nola McConnan's annual "Just Horses" workshop. Participants practiced life drawing with Relhok's equine models. As a bonus they were introduced to many aspects of the FEI



Driving Division by host Jeffrey Kohler himself an international competitor.

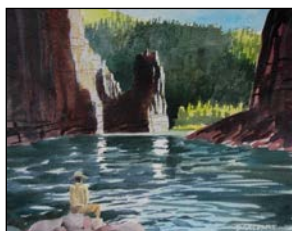
NOLA MCCONNAN (Toronto, ON) Destination Rosseau is the three month festival of theatre, ART, music and film, held in this tiny community at the head of Lake Rosseau. Artists came from near and far to record "A Day in the Life of Rosseau" in the medium of their choice. McConnan's "The Seabird" was the sole work in watercolour.



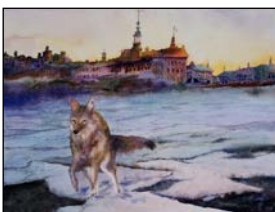
ANGELA LYNCH (Toronto, ON) I had the pleasure of painting "with Constable and Turner" at Petworth House in the beautiful South Downs of England. With wild deer in the woods behind, the pond presented itself. It was almost too much to take in, having seen the paintings inside, and then to the lawn where great painters walked before.



DOUG GELDART (Toronto, ON) I took my two sons on a 10 day canoe trip down the Nahanni River in the NWT in July 2014. I took my plein air kit and completed a number of paintings on a successful trip.



EVELYN DUNPHY (West Bath, ME) Three of her paintings will be



included in the invitational exhibition *Coyote Connections* at the University of New England Art Gallery during October-November. Her painting *Morning Glory* is the cover art for a new book of poetry by Kate Barnwell. <http://www.grosvenorartistmanagement.com/>

BITA MOTAMEDI (Vancouver, BC) has had her watercolour Painting *A garden in my mind's eye* accepted in the Annual International Representational Show 2014 (AIRS), Federation of Canadian Artists.



Protect your art with Crystal Clear Art Packaging
Crystal Clear Bags are acid-free and resealable!

CRYSTAL CLEAR BAGS CANADA

Crystal Clear Bags | Eco Clear Packaging
Crystal Clear Boxes | Gift Bags | Envelopes & Card Stock | Folders
Vinyl Products | Foamboards | Socking | Mats | Card Boxes | More...

Crystal Clear Boxes | Eco Clear Packaging
Crystal Clear Bags | Gift Bags | Envelopes & Card Stock | Folders
Vinyl Products | Foamboards | Socking | Mats | Card Boxes | More...

Your Canadian Source for the Ultimate in Artistic Packaging!
www.clearbags.ca
Toll Free: 1 888 436 6197

The CSPWC would like to extend a warm "thank you" to **Crystal Clear Art Packaging** for supplying our Western region artists free samples of their clear storage bags.

Thanks also to **Karin Richter**, who was our contact for them in Calgary.

Henry Vyfvinkel CSPWC, FOWS, MFA

1935 — 2014

Henry Vyfvinkel – Artist, Teacher and Friend

With great sadness I must report the passing of **Henry Vyfvinkel**, a long-time friend and artist. Henry passed away August 19 at age 79.

Henry will be remembered best for his wide-spread influence on the artistic scene along the St. Lawrence corridor. He taught art to hundreds of students through St. Lawrence College, Brockville. His influence touched many present artists, myself included. Henry was always generous with sharing his talent, and enthusiastic with praise. I will remember him best for his for outdoor painting, on the river among the 1000 islands of the St. Lawrence. He loved the rocks, the wind-blown trees, and flash of water along his river. With an artist group surrounding his easel, he would always patiently, and enjoyably, demonstrate how to capture all those images.



Henry started a Summer Arts program which quickly evolved to become the popular Summer School of the Arts. (SLC-Brockville) He also gave strong support to the continuing role of Marianne Van Silfhout Gallery at the college. He was influential during its formative process and served on the Curatorial Committee.

He was very active with the Ottawa Watercolour Society. He was a member of the CSPWC/OWS Symposium 90 Organizing Committee, and one of the teachers. He was a Fellow of OWS, a frequent Juror and Guest Critique. OWS appointed Henry as Life Member OWS.



Henry was elected to Canadian Society of Painters in Water Colour in 1991 and made Life Member in 2009. He received the Ontario Premier's Award in 2005. Over the span of his career he was awarded numerous awards and tributes; recognitions of his art, his role as a teacher and his influence within the art scene. He was recently elected to the Marianne Van Silfhout Gallery's Hall of Fame.

A celebration of Henry's life and career, **CELEBRATION OF LIFE – A MEMORIAL**, was held Saturday, September 6, 2014, at the Marianne Van Silfhout Gallery, St. Lawrence College, Brockville Campus. - Alan Bain CSPWC SCA OWS

