

water COLOUR



THE CANADIAN SOCIETY OF PAINTERS IN WATER COLOUR / LA SOCIÉTÉ CANADIENNE DE PEINTURES EN AQUARELLE • JAN 2017

New!
Read Inside!



CSPWC Symposium 2017

Calgary, Alberta

ADMINISTRATOR

Anita Cotter
80 Birmingham St
Unit B3
Toronto, Ontario M8V 3W6
416-533-5100
Email: info@cspwc.com
Website: www.cspwc.com

CSPWC EXECUTIVE

President

Rayne Tunley

1st Vice President

Garry Hamilton

2nd Vice President

Jean Pederson

Past President

William Rogers

Directors

Vera Bobson
Gill Cameron
Peter Marsh
Micheal Zarowsky

REGIONAL DIRECTORS

**British Columbia
& the North**

Heidi Lambert

Alberta & the Prairies

Rex Beanland

Western Ontario

Lin Souliere

Northern Ontario

Ellen Catherwood

Eastern Ontario/Treasurer

Robert Shackles

Central Ontario

Lin Souliere

Quebec

Atlantic Provinces

Nora Gross

PUBLICATION DATES

Spring— March 2017

Summer—June 2017

DEADLINES:

March 15, 2017

June 15, 2017

Editor

Anita Cotter

Newsletter Design

Rayne Tunley

Watercolour – a performance art!



Happy New Year!

We have another busy time coming up with opportunities for both CSPWC members and associates. Please review the calendar of

events, and mark yours!

January has seen a flurry of activity at the **PAMA Gallery** in Brampton where **Gerrie Loveys**, Assistant Curator, has been working on her thesis entitled, “WATER AND PIGMENT: MYSTERIOUS INTERACTIONS”. Her plan has been to investigate the complexities of watercolour, selecting artworks from the CSPWC Diploma Collection to demonstrate the concepts she has been exploring. Once she has hung the show, she will be letting us know which paintings she has chosen for this exhibit. We all wait with bated breath. During this exhibition some members of the CSPWC have volunteered to give a demonstration during the exhibit. If you are also interested in giving a demo, please let us know at the CSPWC office. The exhibit details are listed on pg. 4 of this newsletter.

Lin Souliere, Director of the **Santa Fe Gallery** has once again generously offered her gallery

Message from the President Message du Président

to the CSPWC for a Juried Members and Associates exhibition. This exhibition will be juried by both Lin and myself. We are pleased that this exhibit will be open to *all* members and associates. Details for this exhibition are posted on pgs 5—7.

On May 6, 2017 our **Annual General Meeting** will be held again at the **Arts & Letters Club** in Toronto. Many of our members find this venue a powerful historical location to hold our meetings. The Arts & Letters Club was founded in 1908 by a group of writers, musician, architects, academics and supporters of the arts. We have found it to truly be an excellent rendezvous where our members and associates have met for mutual fellowship as well as being able to share their common interests and goals as watercolour artists. This year we are delighted to have been able to organize a special ‘sit-down’ hot meal. The cost, however, will be increased by about \$10.00 per person, which I believe will be worth it.

We are also in the process of looking for a **Guest Speaker** for our event. If you have any ideas, please send them along to the office.

PAINT-OUTS

Let us know if you are interested in hosting a paint-out this spring/summer/fall. **Neil Broadfoot** has one already planned at the

	Contents
President’s Message	2
Coming Events	3
Regional Report/PAMA	4
Water Reflections Call for Entry	5-7
CSPWC Symposium Calgary	8-13
Opportunities for Artists	14
FaceBook Info...	15—16
Member’s News	17-18
CSPWC Xmas gathering	19

Lang Pioneer Village near the village of Keene (Peterborough) . We will be sending along more information shortly both through a "Newsflash" and through the next newsletter in the spring. Also, watch for information for a painting excursion with the "**Doors Open**" event where we will be painting at the **Doris McCarthy** home—"Fool's Paradise" in Scarborough.

This newsletter is the beginning of the news of our upcoming **CSPWC Symposium 2017** which will be held in **Calgary** in August. We have an amazing set of instructors, and the location is, well—location, location, location! You will find more info about this event on pgs 8—13. The brochure is being prepared by **Nadien Cole**, and once it is ready we will be circulating it to you.

Of course there are events in the works, and this will definitely be another exciting year for us.

Finally, I want to thank the many volunteers who are coming out to help with events, exhibitions, meetings and gatherings, hosts of paint-outs, jurying, and the list now goes on. We are definitely open-armed to more volunteers, too, as this really helps the society to move forward in our common goals and artistic directions.

As watercolourists alike like to say: "*Keep those brushes wet!*"

Warm regards,

Rayne Tunley



From The Desk of Your Administrator:



Happy New Year! 2017 will celebrate 150 years for our great country CANADA, and not only that, the CSPWC is another year older, at 92 years, and as your administrator, I celebrate my 6 year anniversary in this position. 2016 was the busiest year by far, under the helm of our very hard working President Rayne Tunley and all the dedicated Executive Board members who volunteer their time with meetings and events. But each year gets better and more fun for me because of the wonderful friendships I have made along the way. 2017 promises to continue to bring exciting exhibitions and social events and we hope you will all try to be a part of it. We always welcome your support in any way; volunteer your time, arrange an exhibition, paint-out, or symposium or simply make a donation. We are here to help you.

You won't regret it. This is an amazing society. Get involved! Join us and have Fun!

2017 dues are now being collected on-line through Paypal, www.cspwc.com, or by mail,

CSPWC 80 Birmingham St. B3, Toronto, ON M8V 3W6 We thank you for your continued support.

Anita Côtter



CSPWC Calendar of Events

2017

July

PAMA EXHIBITION

WATER AND PIGMENT: MYSTERIOUS INTERACTIONS

9 Wellington St E, Brampton , ON

Feb 6—March 19

Opening Reception: Feb. 19 (2-4pm)

April 8—May 26

Call for Entry deadline: midnight March 6

Water Reflections

Santa Fe Gallery, Owen Sound, ON

Opening Reception: Apr. 8 (1-4pm)

Annual General Meeting—May 6

Arts & Letters Club

14 Elm Street, Toronto, ON

Saturday, May 6, 2016

9:30—3:30

Aug. 19—24

**CSPWC Watercolour Symposium
Calgary, Alberta**

Open Water Call for Entry

To be announced

ALBERTA AND THE PRAIRIES REGIONAL REPORT

By Rex Beanland



Brent Laycock at Banff Springs Hotel Residency

Brent Laycock: Artist in Residence at the Banff Springs Hotel

For two weeks in January, Brent Laycock was the guest at the Banff Springs Hotel where he worked as the Artist in Residence. He was invited by the Mountain Galleries at the Fairmont Banff Springs, where Brent has been exhibiting for several years, to work in a dedicated studio space on the hotel mezzanine level. The "Art Room" is decorated with Brent's paintings, and guests are welcome to peruse the artwork, chat and watch the artist at work. It's a symbiotic relationship in which the hotel gets an interesting activity for their guests, and the artist enjoys the comforts of the hotel. It has provided an excellent opportunity to meet people from around the world. Brent worked on various mountain landscapes in acrylic and watercolour.



Laycock Water Rhythms watercolour 14x22



Beanland Kensington Market

Rex Beanland has just finished filming his new DVD. The subject is an Urban Landscape painting based on a subject from Kensington Market. The DVD will be available soon. This is the painting that was done on the DVD.

FEBRUARY 6 – MARCH 19, 2017



Ann Balch, Canadian
Regret 2001
 Watercolour on paper
 From the CSPWC/SCPA
 National Diploma Collection
 © the artist

RECEPTION
 SUNDAY, FEB. 19
 from 2–4 p.m.

“ My approach in curating the exhibition was to celebrate the Society’s 90+ years in a way that was consistent with the goals of the CSPWC from the time of its creation -- to educate and promote watercolour painting. When reviewing the 400 works in the diploma collection, I focussed on selecting paintings that represented various themes that I had identified in advance. Approximately 50 works were selected from the CSPWC diploma collection and I borrowed 15 works to represent founding members and those artists who were members before the diploma collection was formed. “

Sincerely,

Gerrie Loveys

Assistant Curator
Art Gallery and Education Services
Peel Art Gallery, Museum and Archives (PAMA)

9 Wellington St E, Brampton ON



Water reflections

*Canadian Society of
Painters in Water Colour*

Members & Associates

CSPWC Juried Exhibition 2017

A Water Based

April 8—May 26, 2017

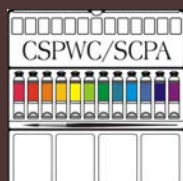
Santa Fe Gallery

828 3rd Ave., E.
Owen Sound, ON

**Exhibition Reception
& Awards Ceremony**

Saturday, April 8, 2017
1:00 – 4:00 pm

*Thought
Consideration
Contemplation
Deliberation
Meditation
Muse
Reflect*



Water

Reflections Juried Exhibition is
open to **ALL**

CSPWC Members and Associates.

Water Reflections Juried Exhibition 2017

This exhibit is open to all CSPWC Members and Associates of the CSPWC.

The water based media must be soluble in water (artist's quality watercolour paint, applied transparently or opaquely). Casein and egg tempera also accepted. Other water based media: gouache, acrylic, ink, etc. must not make up more than 20% of the final painting.

The paint surface is an organic fiber paper, including watercolour paper mounted on board, canvas, yupo. Glass, plexi, wax and varnish as a surface protectant are accepted.

Only media listed in the definition above are permissible (no photos, pastels, collage).

Application may be by freehand pencil, brush, or any tool by the artist without mechanical assistance. Computer generated work will not be accepted.

Where to find the Water Reflections "Call for Entry"

1. The next two pages
2. Write info@cspwc or visit www.cspwc.com
3. FaceBook
4. It will also be emailed to you

ENTRY DETAILS



The exhibition is open to CSPWC members and Associates of the CSPWC. Entry is juried by digital image.

Prize-winning paintings will be selected from the original work at the time of hanging.

Entry Fee: \$40

Entry fees are non-refundable.

Image Instructions: Digital files must be in JPEG format, about 1 MB in size and readable on a PC. Images can also be mailed to the CSPWC office on a CD in the same format. Refer to example given on the Entry Form.

Submissions: Submission may be made either of two ways:

1. **Online** at www.cspwc.com under "Water Reflections: CSPWC (Member/Assoc) Juried Exhibition 2017 - Call for Entry"
 - a) **Pay using PayPal, Visa or MC** for payment of entry fees at cspwc.com
 - b) **Email** info@cspwc.com all required information as follows:
 - Your name, address, telephone number, email address
 - A list of the entries (up to 2) identified separately, according to the required naming format
 - Identify whether the painting is for sale or not. Identify the value of each painting.
- Images (up to 2) as attached jpegs about 1 MB in size. Do not copy the images into the body of the email. The artist in submitting digitally also agrees to all of the terms and conditions of entry as per this form.

2. By Mail:

- a) Pay by cheque payable to "CSPWC/SCPA" or by Visa/MC.
- b) Mail your Entry form, Payment, and CD in required format.

Mail to: "CSPWC Water Reflections Exhibition",

80 Birmingham St., Unit B3, Toronto ON Canada M8V 3W6

SEND: -Entry Form -CD -Payment • SASE if no email address

For Further Information Contact: CSPWC Administrator,
tel: (416) 533-5100, or check our website at www.cspwc.com
Entries must be received by midnight March 6, 2017

WATER REFLECTIONS



JURORS

Lin Souliere CSPWC SCA

Rayne Tunley AOCAD CSPWC SCA OSA

Water Reflections Juried Exhibition 2017

This exhibit is open to all CSPWC Members and Associates of the CSPWC.

The water based media must be soluble in water (artist's quality watercolour paint, applied transparently or opaquely). Casein and egg tempera also accepted. Other water based media: gouache, acrylic, ink, etc. must not make up more than 20% of the final painting.

The paint surface is an organic fiber paper, including watercolour paper mounted on board, canvas, yupo. Glass, plexi, wax and varnish as a surface protectant are accepted.

Only media listed in the definition above are permissible (no photos, pastels, collage).

Application may be by freehand pencil, brush, or any tool by the artist without mechanical assistance. Computer generated work will not be accepted.

AWARDS

Awards are in the process of being determined. Notifications will be made as soon as possible.

The CSPWC/SCPA has been promoting excellence in watercolour through education and exhibitions since 1925.

For information about our activities or how to join,
visit our website at: www.cspwc.com

water reflections

*Canadian Society of
Painters in Water Colour*
Members & Associates

CSPWC Juried Exhibition 2017

**A Water Based
Media Exhibition**

April 8—May 26, 2017

Santa Fe Gallery

828 3rd Ave., E.

Owen Sound, ON

**Exhibition Reception
& Awards Ceremony**
Saturday, April 8, 2017
1:00 – 4:00 pm

Call for Entry Deadline:
Midnight: March 6, 2017



*Thought
Consideration
Contemplation
Deliberation
Meditation
Muse
Reflect*





CONDITIONS OF ENTRY

1. Artists may submit up to 2 digital images, however, only a maximum of one painting per applicant may be accepted for exhibition.
2. Sales: a 30% commission is deducted from the sale price. Prices must be in Canadian dollars, and cannot be changed. Artists have the option of having a work "not for sale". The Santa Fe Gallery collects HST. If you are an HST registrant, please add the HST to your price.
3. All paintings must be original, created by the artist who is submitting.
4. "Water Reflections: CSPWC Juried Exhibition 2017 at Santa Fe Gallery" is strictly open to submissions painted in water based media as defined in this call for entry. Please see the reverse of this brochure for criteria.
5. All entries must have a professional appearance. If protected under glass or Plexiglas, mats must be white or off-white. Thin coloured liners are acceptable.
6. All works must be ready to hang with wire for installation upon receipt.



ENTRY FORM *(please cut and submit along with your image)*



Any electronic images submitted (or mailed CD's) must be named in the following format:

File name should read as: (including commas) Last Name, First Name, Image Number, Title, Height x Width of Image in Inches, Medium, Year Painting Completed.jpg

Example: Smith, Pierre, 1, Sunset in Algonquin, 22 x 30 inches, watercolour, 2010.jpg

It is essential that you follow this format to avoid any confusion with your submitted images.

Image 1 (unframed)

H X W inches _____ Sale Price: _____
 Title _____
 Medium: _____ Year: _____

Image 2 (unframed)

H X W inches _____ Sale Price: _____
 Title: _____
 Medium: _____ Year: _____

(Note: if you are an HST registrant, please add the HST to your price.)

13. Artists CDs will not be returned.

14. Accepted paintings:

- to be delivered to the CSPWC office in Toronto,
- or hand delivered to the Santa Fe Gallery.

15. If accepted, dates for delivery and other particulars will be confirmed in your acceptance notification.

Please Note:

The artist, by submission of entry, grants the CSPWC the right to use the image of the accepted work for publicity, educational and reference purposes.

7. Size of work: The maximum width or height size of the submitted unframed artwork is 30 inches. Mat borders not to exceed 4 inches.

8. The jury and/or the exhibition chair reserves the right not to hang any painting which does not conform to all the rules of the competition. This includes framing instructions and the medium.

9. Entries that are accepted for exhibition must remain on display until May 26, 2017.

10. Shipping of paintings to and from the exhibition is the responsibility of the artist. This includes shipping costs, brokerage fees and any taxes or duties payable.

11. The CSPWC has no control over shippers or the premises at the gallery. The CSPWC cannot accept responsibility for loss of or damage to paintings or frames, whether due to negligence or otherwise.

12. Artists must cover their own insurance for their artwork.

Method of payment:

- ☐ By Cheque or Money Order (payable to "CSPWC/SCPA")
- ☐ By Credit Card—Visa/MC (Please circle which credit card)

Card # _____

Expiry: ____/____

Signature: _____

Date: _____

☐ Paypal/On-Line entry

I am a Member ☐ Associate ☐

I accept the Entry Conditions

Signature: _____

Save the Date

The Canadian Society Of Painters In Watercolour

Watercolour Symposium

Calgary, Alberta

August 19 - 24, 2017

Get Inspired!

5 days of workshops
all styles, all subjects
featuring some of Canada's
finest watercolourists



Stay tuned www.cspwc.com

SYMPOSIUM 2017

INSTRUCTORS

Eleanor Lowden



Rex Beanland



Jean Pederson



Roberta Combs



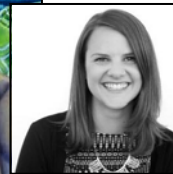
Robert Sinclair



**Marney
Rose Edge**



Brittney Tough



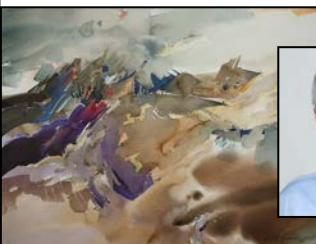
Graham Flatt



Karin Richter



Brent Laycock



Marianne Hunt



CSPWC Symposium 2017—Calgary Alberta

Course Descriptions

- * *More information to come in the Symposium Brochure, which will be emailed/mailed out to you as soon as it is ready.*
- * *photo references in the course descriptions below were sent along as a visual reference to the Calgary area - ** watch for the brochure for specifics*



Rex Beanland

Urban Landscape – Fast & Loose

In this workshop, you will discover a exciting way to capture your impression of an urban landscape subject in a fast and loose manner. There will be a number of fun little practice exercises presented to show you easy ways to create figures and cars. Then you will put it all together in a complete city scape. The emphasis is on capturing your vision of the subject not copying a photo.

Figures In The Urban Landscape

This workshop uses the urban landscape theme but makes the figures a more important part of the painting. You will discover how to create more realistic figures that are in action. The emphasis again is on painting loosely and quickly and identifying the story you want to tell in the painting.



Roberta Combs

Portraits in Watercolour

This workshop will focus on improving portrait painting skills. We will discuss the elements that result in better portrait paintings and choices that contribute



to the success of the painting. The general rules of proper feature placement will be stressed to insure success. You will be directed to look more closely at the details that define an individual. Feature areas such as teeth, eyes, and hair will be of primary focus. The workshop will also focus on color and value choices.

We will endeavor to address every stage of the painting as it develops. I will have examples to support the process from start to finish in order to supply visual direction for the participants. I will also be demonstrating each stage as we progress. As this is a complex and demanding subject, the focus of this workshop will be on quality, technique, care and observation rather than keeping up with the clock.

Artists of all levels will be welcome to participate with the objective to give each artist information and encouragement to improve their present quality and skill level.

Still Lifes in Watercolour

This workshop demo that will show how to approach a painting that includes the challenge of both glass and organic still life objects. I will talk about the aspects of a composition that will help create a successful portrayal of these elements with sparkle and presence. I will also give direction on how to take photos that support a strong composition and include the light and drama that can contribute to a



(For more information about the CSPWC Symposium Calgary, please write the CSPWC office, or email: info@cspwc.com)

CSPWC Symposium 2017—Calgary Alberta

Course Descriptions (cont.)

successful painting. Artists will be encouraged to challenge themselves to look for a dramatic or exciting element even in paintings with simple common subject matter and to use color that creates a strong impact.

Photo reference will be provided but you are also invited to bring your own. As we progress with the painting, I will offer advice to each individual in order to challenge them to reach beyond their current skill level.

Marney Rose Edge

Dramatic Daisies

Learn to paint the drama of backlighting with the playfulness of white daisies. This workshop covers the process I have developed to paint stress-free florals in watercolor. By painting the background first we establish the full range of values to carry us to a successful result. Through demonstrations at each stage, you will learn how to create a dramatic background, create lost edges, use glazing to create the glow and feeling of light.



Lively Irises

Would you like to loosen up in your painting but still keep it realistic? This process incorporates the background at the same time as painting the flowers. In this one day workshop, you will learn how to build contrast with values and color, how to preserve the white paper by painting around it, how to embrace the beauty of watermarks, incorporate textures and use different thicknesses of paint to push your values. I will share and demonstrate each stage so you understand the complete process.



Graham Flatt

The Essence of Landscape

Nothing is more charming or engaging than the classic idyllic landscape. Because I choose to frequently employ a figurative element to animate or populate my paintings, I have moved to a less conventional approach to this timeless subject matter. For me, it is not about incorporating the “traditional elements” such as trees, rocks, rivers, etc. and rendering them definitively, but rather I work to break down the landscape into 5-7 well-designed shapes with a strong emphasis on negative spaces and abstraction. I am not interested in creating the look of a landscape as opposed to the feel. I try to incorporate a series of three oblique planes to create a sense of drama and to draw the viewer deeper into the painting. This breakdown of the landscape to its key elements permits me the opportunity to focus on the essence of the vista as opposed to the vista itself.

Western Landscape

Ever notice how most landscape paintings are devoid of anything that moves – no birds, no animals, no people, nothing? The traditional landscape does not require a figurative element in order to work, however the inclusion of the human figure can provide a keen sense of scale, create drama and tension. It allows the viewer the chance to engage the painting on a much more personal level and all but guarantee the viewer will be drawn to that spot or those figures.

These figures need not be large nor do they need to be detailed in order to be effective. It is simply a matter of understanding the particular “signature shape” or silhouette. My choice of the figurative involves what many refer to as western. This subject matter allows me a tremendous opportunity to not only simplify and abstract the traditional landscape into a few key elements



(For more information about the CSPWC Symposium Calgary, please write the CSPWC office, or email: info@cspwc.com)

CSPWC Symposium 2017—Calgary Alberta

Course Descriptions (cont.)

but to also develop a compelling narrative within the painting. This workshop will introduce you to the concept of the western figure and how to use it to create a powerful and engaging painting. Step by step demos and handouts will begin to help you better understand incorporate this subject matter into your painting.

Brent Laycock

The Music of Watercolour

Brent Laycock will share insights about the correlation between visual and musical expression. Understanding how musical ideas such as rhythm, contrast, motion, time, melody can unlock ideas for expressing emotions in an abstract visual form. Demos, exercises and discussions will guide participants in making abstract compositions work in a way that communicates with more power.



Exploring Unexpected Paths

This workshop will focus on creating unique and expressive visual designs by exploring ideas suggested by commonplace subjects. Watercolour, with its ability to move, blend, run and drip can produce surprising effects unlike any other medium. Learn to exploit these possibilities by understanding colour relationships, design principles and how to turn disasters into exciting paintings.

Eleanor Lowden

Painting the Figure – Courageous Watercolour

Eleanor will challenge the way you use watercolour paint. Working with paint and very little water, she will demonstrate how she applies rich layers of paint to her support to make vibrant exciting paintings. She will discuss what she looks for in her subject matter and how she translates the figure to her paintings. She is constantly taking photos of people wherever she goes, and she uses her photos as reference. Please bring your own photos to the workshop. She will help you transfer the image of the figure to the paper and design your painting. She will spend time discussing your inspiration and help you tell your story. Her work is vibrant, juicy and fun. Her insights will help you bring strength to your paintings.

Painting the Landscape – Courageous Watercolour

Eleanor's work is vibrant, juicy and fun. Her insights will help you bring strength to your paintings. Working with paint and very little water, Eleanor will demonstrate how she applies rich layers of paint to her support to make vibrant exciting paintings. She works quickly with big brushes to create loose and exciting landscapes. She discusses design elements and how to simplify the landscape to create a strong, contemporary painting.



Jean Pederson

Organizing Chaos

You will develop a still life painting on top of a mixed media ground. The morning will be spent creating a layered surface and sketching a still life. Your composition will be applied to your surface and using acrylic paint, you will pull out your image with interesting results! If you own an iPad, bring it for extra fun when the developing your composition! Jean will encourage you to find your inner geek by using your own sketches and photographs to develop unique effects, value patterns using technology! You will have to have download some apps onto your tablet to participate in this portion of the class (or take notes for future reference!)

Kicking it up with Collage

Collage will be integrated into an acrylic surface for interesting visual effects! You will work with acrylic paints and mediums while

(For more information about the CSPWC Symposium Calgary, please write the CSPWC office, or email: info@cspwc.com)

CSPWC Symposium 2017—Calgary Alberta

Course Descriptions (cont.)

integrating collage papers into the surface. Layering and obscuring will be a focus of this action packed workshop!

Robert Sinclair

A Dance with Simplicity

This workshop initially explores becoming grounded and explores the concept of the clues of space perception in art. The main thrust of your participation will focus on simplifying your painting imagery.

You will systematically explore a process of reducing that painting to its 'bare bones' or simplest components and still have that paintings original intent. This workshop is an open ended exploration.

A Brush with Gesture

This workshop initially explores becoming grounded and explores the concept of the clues of space perception in art. The main thrust of your participation will focus on reducing your imagery through the use of gesture. Here we will systematically reduce the amount of time needed to paint each painting until we have just enough time to only paint a few strokes to maintain that painting's original intent. This workshop is an open ended exploration



Brittney Tough

WaterCOLOUR Fabric

Want to achieve vibrant watercolour paintings? Dive in and discover what's on your palette and learn how to achieve your best colour! The world of textiles offers endless colour, texture and pattern inspiration, and is the most playful way to explore the characteristics of your colours. We will use fabric as our subject to create the illusion of luminous light and shadow through saturated colour. With demos and one on one guidance, you will be able to complete one finished painting by the end of the class.

This workshop is designed for those who are newer to watercolour, or those who'd like a colour refresher.

Meet Your Plein Air Instructors

Plein Air Excursions

Your dynamic duo, Karin Richter & Marianne Hunt, are excited to take you to the Rocky Mountains at Calgary's doorstep to spend a day of plein air painting. Well versed in the art of painting outdoors at locations around the world, these two artists will share their methods of how to see correctly and commit a scene to paper on location.

Karin Richter

Marianne Hunt



Painting in Northern Italy

BONNIE STEINBERG

SCA,CSPWC,TWS

Venice,Lake Garda, and Milan

September 4th -14th 2017

Paint your own personal masterpieces under the guidance of accomplished artist and international teacher, Bonnie Steinberg.

Bonnie will conduct group painting classes, discussions, critique sessions and demonstrations covering topics including linear and atmospheric perspective, light, colour and design. Join Bonnie and a small group of painters on this exceptional trip.

September 4th -14th 2017

For further information and a complete detailed itinerary please contact Bonnie at; 905-881-1171 or at: watercolours@rogers.com. Please also contact: Debbie Ross at:

Womens Travel Network.ca

affiliated with Worldwide Quest International

491 King Street E. Toronto, ON M5A 1L9

905-771-8338 or 1-888-419-0118

Reservations: 416-633-5666 or toll free 1-800-387-1483 debbie@womenstravelnetwork.ca www.womenstravelnetwork.ca

www.facebook.com/Womenstravell www.womenstravelnetwork.ca/blog



The Salt Spring
National Art Prize

Call for Artist Submissions

January 12 - May 31, 2017

Juried exhibition on Salt Spring Island
September 22 - October 22, 2017

Winners presented at
Gala Awards Night: **October 21, 2017**

- two and three-dimensional art
- Canadians and permanent residents
- **\$30,000** in prize money

Details and entry form on website
www.saltspringartprize.ca



The Salt Spring
National Art Prize

Sponsored by



salt spring
arts council

2017 PAINT AND PADDLE ART ADVENTURES



Tom Thomson Country Plein Air Paddling Art Adventure series

This special series will take place in Grey County, Bruce Peninsula and Algonquin Provincial Park and highlight local landscapes where Tom Thomson's history and art inspirations began and matured.



Join us on this special series of paddling and plein air art adventures sure to inspire your inner artist.

A certified O.R.C.K.A. Canoe Tripping leader will guide participants throughout these tours and featured landscape artists will facilitate on site instructional painting.

<http://www.paintandpaddle.com/plein-air-and-paddling-art-adventures.html>

Date: July 8, 9



facebook

FACEBOOK

The CSPWC would like to introduce to you our new FaceBook Administrator, **Ona Kingdon**.

Ona has been exceptional in sharing the CSPWC news to the world. She has also created on-line competitions, Christmas events and plans on introducing us all to what else FaceBook has to offer to help us share our art, art news, events etc. to all.

Below she has written a "how to" step-by-step to help us along with getting her our news.

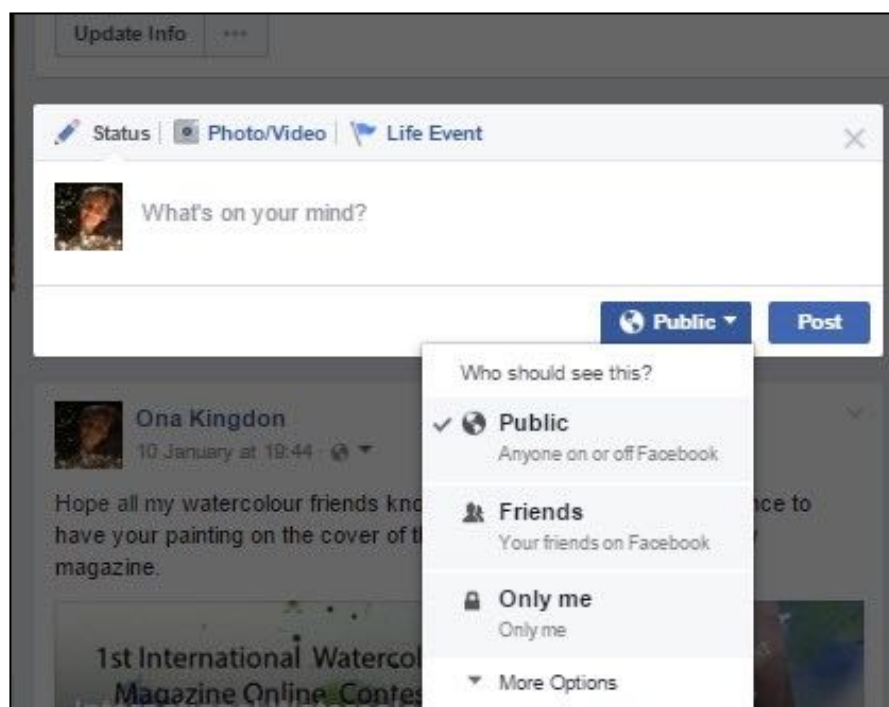
Thank you Ona!



Social Media is a great way to help let people know about the CSPWC both in Canada and around the world. We have amazingly talented Members and Associates and we want to use our CSPWC Facebook page to not only remind you about upcoming events or entry deadlines, but also to help to promote your watercolours. We would like to share your art related news too. We also want to use social media to provide us with a greater sense of community within Canada. We are so spread out geographically as Canada is such a large country but via the internet and social media we can feel far closer.

To do this we need you to do 3 things

1. If you haven't already done so please like and follow our Cspwc/scpa facebook page <https://www.facebook.com/Cspwcscpa123/> and visit it regularly to see what is being posted there.
2. Make any art related posts you make on your own timelines 'public'. You can change your audience setting for any posts you make by clicking on the blue box to the left of the post box. Then select public from the drop down list. We cannot share a post to our page unless it is public.



3. Tag Cspwc/scpa in your posts so our social media coordinator Ona Kingdon is notified when you post. Just start typing @Cspwc/scpa in your post. A drop down box will appear and you can then click on us to make the tag active.



As a note: Our CSPWC Facebook page will not replace the current newsletters but will work in addition to it. It will provide a PUBLIC front to CSPWC for the world to see. Any sensitive information will be sent via e mail or the newsletter.

If you haven't already done so please send Ona Kingdon a friend request so she can tag you in any relevant posts about you and your art or let you know about our online events and contests that we are now running on facebook.

PAM MCKINNON (Brockville, ON) was accepted into the 9th annual juried Art and Soul, exhibited in December at the Marianne Van Silfhout Gallery at St. Lawrence College in Brockville. She won 2nd prize for her watercolour "Exposure".



POPPY BALSER (Digby, NS) was awarded 2nd prize in the September Bold Brush Painting Competition for her painting "The Angelique at the Dock". She was also pleased to have two paintings accepted into Randy Higbee Gallery's 6x6" squared show in Costa Mesa, California.



STERLING EDWARDS (Henderson, NC USA) was recently honored with a lifetime signature membership in the Whiskey Painters of America. There are only 150 members worldwide and it is considered the most unique and exclusive miniature painting society in the world.

Also, Sterling was accepted into the Marquis Who's Who in America Art in both 2016 and 2017. Both are a great honor as you have to be juried by a committee that bases its decisions on a person's accomplishments in their chosen field, professionalism, ethics, and integrity. Congratulations Sterling.

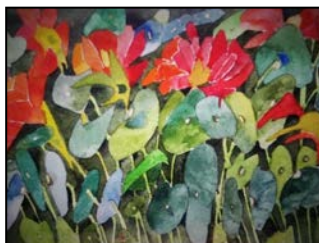
MARGARET ELLIS NACHSHEN

(Beaconsfield QC) had her hand coloured etching 'Welcome' accepted in the American Artists Professional League 88th Grand National Exhibition in New York in November and her

Watercolour, 'Pipedreams' won the Edgar A. Whitney Memorial Award at the Catharine Lorillard Wolfe Art Club's 120th Open Exhibition in New York in December. (photo pipe)



'BARBARA LARGE (Alliston ON) will be showing 17 of her paintings at the Millcroft Inn and Spa, Alton, Ontario from Monday, January 9th, 2017 until Monday, March 6th, 2017. Millcroft Inn & Spa, 55 John Street, in the Village of Alton, Ontario L7K 0C4. Tel.# 1.800.383.3976.



Pat Fairhead (Bracebridge, ON)

Pat Fairhead @90—a retrospective. April 2—April 28, 2017. Public Opening: Sunday, April 2, (1-4pm). Show continues to April 28, 2017 with viewing by appointment. Arts & Letters Club, Toronto, ON 14 Elm St. Toronto



Rex Beanland, (Calgary, AB) has just finished filming his new DVD. The subject is an Urban Landscape painting based on a subject from Kensington Market. The DVD will be available soon. This is the painting that was done on the DVD.



BRENT LAYCOCK: Artist in Residence at the Banff Springs Hotel

For two weeks in January, Brent Laycock was the guest at the Banff Springs Hotel where he worked as the Artist in Residence. He was invited by the Mountain Galleries at the Fairmont Banff Springs, where Brent has been exhibiting for several years, to work in a dedicated studio space on the hotel mezzanine level. The "Art Room" is decorated with Brent's paintings, and guests are welcome to peruse the artwork, chat and watch the artist at work. It's a symbiotic relationship in which the hotel gets an interesting activity for their guests, and the artist enjoys the comforts of the hotel. It has provided an excellent opportunity to meet people from around the world. Brent worked on various mountain landscapes in acrylic and watercolour



MARLENE MADOLE (Brampton, ON) is teaching a Thursday Evening series of Watercolour Workshops: from 6:30 pm – 8:30 pm on February 9, 16, and 23. Each night explores a different subject and technique. Discount for the series. Supplies included. This will be in conjunction with the 90th Anniversary PAMA Exhibition of the CSPWC Diploma Collection show – Peel Art Gallery, Museum + Archive. To register: www.pama.peelregion.ca 905-791-4055

VIRGINIA MAY (CALEDON, ON) has completed her second writing project. A beautiful book celebrating Canada's 150 years, entitled: Canada A-Z. To order a book please contact

virginiamay001@gmail.com

A great follow up to her first publication "Toronto Through Time, Stories of Toronto's Past".



RAYNE TUNLEY (Port Credit)

Rayne Tunley has works exhibiting at the John A. Libby Fine Art Gallery, 463 King St E, Toronto, ON. Next exhibit date tba.

RAYNE TUNLEY and GERY PULEY (Burlington)

Rayne Tunley and Gery Puley are having a "Mother/Daughter" exhibit at the Art Gallery of Burlington, On., 1333 Lakeshore Rd, Burlington ON, from March 21 – April 18, 2017. Opening Reception is on March 21, 2017.



Details: rayne@raynetunley.com

NORA GROSS, (Halifax, NS)



Can You Make a Contribution?

The CSPWC/SCPA Endowment Fund operates under the umbrella of The Toronto Community Foundation. It is probably the most important factor contributing to a stable financial future for the CSPWC/SCPA. The fund has been in operation since 2011 but it takes considerable time for people to join in the effort and to understand the importance of an endowment fund. Firstly, any money you donate will never be spent. Only the interest is spent. This is a very important point since a multitude of contributions will remain in operation in perpetuity. Additionally, the fiduciary responsibilities in terms of security and audit are maintained for the most-part by the Toronto Community Foundation, which eliminates ongoing responsibilities for our volunteer board on a yearly basis. Personally I donate \$5 a month. It sounds like a small amount until one adds up the years that I have been doing this. If every member did this we would have a considerable sum of cash which would be enlarging in effectiveness on an ongoing basis. I know it would not be easy for some members to do this, but if it was done by those who can afford to do it, it would be appreciated by all those who would like to see our era leave a legacy for the future. Individuals make their contribution to the society in many different ways. If you can make any sort of donation to our endowment fund I urge you to do it. It is the most effective way we can improve the future financial well-being of the Society. - *Peter Marsh*

CSPWC Christmas Gathering

2016



Rayne Tunley and Anita Cotter



Rayne warming by the fire



Vera Bobson, (left)



Virginia May with her new book



*Gill Cameron (left),
Vera Bobson (right)*



Gil Caldwell and John Reid



Vera and Janet Baker



Trouble...